

PHILIPS

HearSuite

Creating connections

Staying connected is fundamental to human beings. With hearing loss, one's ability to understand speech is compromised and connecting to others is more difficult. Combining sound processing and connectivity technologies, Philips HearLink is designed to make speech clearer and help users connect to people and the world.

Pioneering AI sound technology with new HearLink 7030 | 5030 | 3030 | 2030

The unique audiological features of Philips HearLink are available in all device styles and five different price points.

The new rechargeable miniBTE T R and non-rechargeable miniBTE T 7030, 5030, 3030 and 2030 are engineered with the latest AI Noise Reduction (AI-NR) to make speech even clearer, in the noisiest environments. We have also extended our portfolio to offer our premium AI sound technology at lower price points. We have introduced 3030 and 2030 instruments to ensure that more of your clients can benefit from AI-NR and hear better even in noisy environments.

Mobile phones cast to TV screens, earpods wirelessly connect to mobiles, and mobiles stream music through car stereos. People have become accustomed to seamless connectivity between their everyday devices. They appreciate the ease and comfort it brings. Their demand for comfort, further fuels innovation in the area. For someone with hearing loss, their hearing aid is likely their most important device. Being able to link it with other technology, and thus facilitate their lifestyle, is essential.

With our latest innovation we were driven by the importance of connectivity. Particularly, its ability to provide a wholistic, premium, hearing aid user experience. The new hands-free communication feature makes it possible to stream the user's voice from the hearing aid microphone back to an iPhone® and iPad®** without the use of the Philips AudioClip. Now users can communicate with others even more easily. Philips HearLink partners premium technology with a recognizable consumer brand to create and preserve connections between people.

*Enabled by a new Bluetooth® Low Energy protocol.



Philips HearLink product portfolio

The intelligent rechargeable

MNRT R



This advanced premium hearing aid is the smartest solution. It is powered with AI sound technology for even better hearing. The rechargeable battery is fully charged within only 3 hours. It can have different speakers for mild to severe hearing losses.

Colors



Series

| | |
|------|--------------------|
| 7000 | HL 7030 |
| 5000 | HL 5030 |
| 3000 | HL 3030 <i>New</i> |
| 2000 | HL 2030 <i>New</i> |

The rechargeable

MNRT R



This premium hearing aid with a rechargeable battery is fully charged within only 3 hours. It can have different speakers for mild to severe hearing losses.

Colors



Series

| | |
|------|---------|
| 7000 | HL 7010 |
| 5000 | HL 5010 |
| 3000 | HL 3010 |
| 2000 | HL 2010 |

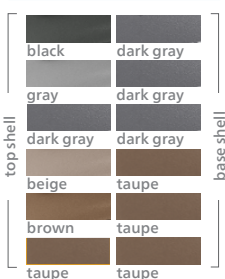
The intelligent functional

MNRT



This discreet hearing aid is powered with AI sound technology for even better hearing. It comes with telecoil and double push button for ease of use. It can be used for mild to severe hearing losses.

Colors



Series

| | |
|------|--------------------|
| 7000 | HL 7030 |
| 5000 | HL 5030 |
| 3000 | HL 3030 <i>New</i> |
| 2000 | HL 2030 <i>New</i> |

The functional

MNRT



This discreet hearing aid comes with telecoil and double push button for ease of use. This hearing aid can have different speakers for mild to severe hearing losses.

Colors



Series

| | |
|------|-------------------|
| 7000 | HL 7010 |
| 5000 | HL 5010 |
| 3000 | HL 3010 HL 3000 |
| 2000 | HL 2010 HL 2000 |

The stylish

MNR



The small and sleek receiver-in-the-ear hearing aid that fits discreetly behind the ear. This hearing aid can have different speakers for mild to severe hearing losses.

Colors



Series

| | |
|------|-------------------|
| 7000 | HL 7010 |
| 5000 | HL 5010 |
| 3000 | HL 3010 HL 3000 |
| 2000 | HL 2010 HL 2000 |

The strong

BTE PP



This hearing aid style is most commonly used for severe to profound hearing losses. It is a full-featured behind-the-ear hearing aid with telecoil and double push button.

Colors



Series

| | |
|------|-------------------|
| 7000 | HL 7010 |
| 5000 | HL 5010 |
| 3000 | HL 3010 HL 3000 |
| 2000 | HL 2010 HL 2000 |

The powerful

BTE SP



This powerful hearing aid style is for people with severe to profound hearing losses. It is a full-featured behind-the-ear hearing aid with a telecoil, a single and a double push button for easy volume and program change.

Colors



Series

| | |
|------|---------|
| 7000 | HL 7020 |
| 5000 | |
| 3000 | HL 3020 |
| 2000 | |

The mighty

BTE UP



This robust hearing aid is the most powerful aid. It is suitable for people with severe to profound hearing loss. It is a full-featured behind-the-ear hearing aid with telecoil, a single and a double push button for easy volume and program change.

Colors



Series

| | |
|------|---------|
| 7000 | HL 7020 |
| 5000 | |
| 3000 | HL 3020 |
| 2000 | |

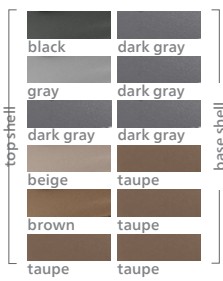
The robust rechargeable

MNB T R



This rechargeable hearing aid is powered with AI sound technology for even better hearing. It suits up to moderately severe hearing losses. It is a full-featured behind-the-ear hearing aid with telecoil and push button. The rechargeable battery is fully charged within only 3.5 hours.

Colors



Series

| | | |
|------|---------|------------|
| 7000 | HL 7030 | New |
| 5000 | HL 5030 | New |
| 3000 | HL 3030 | New |
| 2000 | HL 2030 | New |

The robust

MNB T



This hearing aid is powered with AI sound technology for even better hearing. It suits up to moderately severe hearing losses. It is a full-featured behind-the-ear hearing aid with telecoil and push button.

Colors



Series

| | | |
|------|---------|------------|
| 7000 | HL 7030 | New |
| 5000 | HL 5030 | New |
| 3000 | HL 3030 | New |
| 2000 | HL 2030 | New |

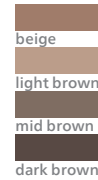
The convertible

ITC



The small and sleek receiver-in-the-ear hearing aid that fits discreetly behind the ear. This hearing aid can have different speakers for mild to severe hearing losses.

Colors



Series

| | |
|------|---------|
| 9000 | HL 9000 |
| 7000 | HL 7000 |
| 5000 | HL 5000 |
| 3000 | HL 3000 |
| 2000 | HL 2000 |

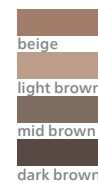
The discreet

CIC



The completely-in-canal hearing aid style is for mild to moderately severe hearing losses. It is worn completely in the ear canal and is barely visible from the outside.

Colors



Series

| | |
|------|---------|
| 9000 | HL 9000 |
| 7000 | HL 7000 |
| 5000 | HL 5000 |
| 3000 | HL 3000 |
| 2000 | HL 2000 |

The extra small

IIC



The smallest Philips HearLink hearing aid that fits deeply in the ear canal and is practically invisible. This hearing aid style is for mild to moderately severe hearing losses.

Color



Series

| | |
|------|---------|
| 9000 | HL 9000 |
| 7000 | HL 7000 |
| 5000 | HL 5000 |
| 3000 | HL 3000 |
| 2000 | HL 2000 |

Receiver-in-the-ear & behind-the-ear styles

| Model series | AI sound technology that makes speech clearer in noise | Rechargeable | Connects directly to Android™ smartphone, TV, tablet* ** | Connects directly to iPhone® , iPad, iPod touch* | Hands-free communication to and from your iPhone and iPad* | Severe to profound hearing loss | Moderately severe hearing loss | Slight to moderate hearing loss |
|---|--|--------------|--|--|--|---------------------------------|--------------------------------|---------------------------------|
| The intelligent rechargeable MNR TR - 7030 - 2030 | ● | ● | ● | ● | ● | - | ● | ● |
| The rechargeable MNR TR - 7010 - 2010 | - | ● | ● | ● | - | - | ● | ● |
| The stylish MNR - 7010 - 2000 | - | - | - | ● | - | - | ● | ● |
| The intelligent functional MNR T - 7030 - 2030 | ● | - | ● | ● | ● | - | ● | ● |
| The functional MNR T - 7010 - 2000 | - | - | - | ● | - | - | ● | ● |
| New The robust rechargeable MNB TR - 7030 - 2030 | ● | ● | ● | ● | ● | - | ● | ● |
| The robust MNB T - 7030 - 2030 | ● | - | ● | ● | ● | - | ● | ● |
| The strong BTE PP - 7010 - 2000 | - | - | - | ● | - | ● | ● | - |
| The powerful BTE SP - 7020 & 3020 | - | - | - | ● | - | ● | ● | - |
| The mighty BTE UP - 7020 & 3020 | - | - | - | ● | - | ● | - | - |

*For information on compatibility, please visit hearingsolutions.philips.com/compatibility.

**All models stream from Android smartphones, TV and tablet using the Philips AudioClip accessory that can be purchased separately.

In-the-ear styles

| Model series | AI sound technology that makes speech clearer in noise | Rechargeable | Connects to iOS and Android | Telecoil* | Moderate to severe hearing loss | Slight to moderate hearing loss |
|--------------------------------------|--|--------------|-----------------------------|-----------|---------------------------------|---------------------------------|
| The extra small IIC - 9000 - 2000 | - | - | - | - | - | ● |
| The discreet CIC - 9000 - 2000 | - | - | - | - | - | ● |
| The convertible ITC - 9000 - 2000 | - | - | - | ● | ● | ● |

* Telecoil available as an optional feature

For more information on Philips HearLink, visit hearingsolutions.philips.com/en-ca

How to navigate the Philips HearLink product portfolio

Staying connected is fundamental to human beings. With hearing loss, one's ability to understand speech is compromised and connecting to others is more difficult. Combining sound processing and connectivity technologies, Philips HearLink are designed to make speech clearer and help users connect to people and the world.

Understanding the value of a higher series:

- better speech clarity to the user due to the higher frequency bandwidth
- series are from 9000 to 2000, with 9000 being the highest
- better support to the user to understand conversation in noisy places due to more powerful directionality and noise reduction processing
- more settings for hearing care professionals to be able to better fit the needs of individual users.



The smartest Philips HearLink miniBTE T R 7030 | 5030 | 3030 | 2030

The new Philips HearLink features unique AI sound technology that removes noise efficiently to create a superb sound quality. New Speech Clarifier further makes speech stand out in noise. Add to that the industry's smartest dome with SoundTunnels™ to improve sound quality and lower the risk of feedback.

Then add improved connectivity options to directly stream sound from iOS and Android devices. It's a winning combination for helping people with hearing loss to connect.

Hands-free communication

Directly stream the user's voice from the hearing aid microphone back to an iPhone and iPad*

HiFi Music

Amplification scheme optimizes low and high frequencies in music

SoundMap 2

With AI sound technology

Acoustic options

Many domes and earmolds

LED

Battery and charging indicator

SoundTie 2

Now with direct sound streaming from iOS and Android devices

Telecoil

Made for
iPhone | iPad | iPod

Works with
android

Push button

Volume and program change

Colors

| | | | |
|-----------------------|--|-------------------|---|
| beige taupe |  | gray dark gray |  |
| dark brown taupe |  | taupe taupe |  |
| dark gray dark gray |  | black dark gray |  |

Portable MNB Charger Plus

*Enabled by a new Bluetooth® Low Energy protocol

How Philips HearLink helps you connect

SoundMap technology creates the sound of Philips HearLink and helps users to connect with people they see everyday. It is made up of three sound processing pillars:



SoundMap Noise Control: Reduces background noise and makes speech easier to understand in noisy places.



SoundMap Amplification: Optimizes the audibility of sound details and clarity of speech information. Speech envelope cues are better preserved in noisy environments.



SoundMap Feedback Canceller: Quickly and effectively detects and counteracts the early build-up of feedback. The feedback growth is stopped by applying a short breaker signal.

SoundMap 2 technology uses groundbreaking AI sound technology to support users to connect with all people near and far using the latest innovations.



SoundMap 2 Noise Control with new AI Noise Reduction: Reduces background noise and makes speech easier to understand in noisy places. Now improved with artificial intelligence sound technology, making speech even clearer in noise.



SoundMap 2 Amplification with new Speech Clarifier: Enhances the clarity of speech in noisy environments, set to personal preference.



How Philips HearLink connects to the world

SoundTie and SoundTie 2 technology allow users to take full advantage of modern connectivity and stay in touch with friends, family and the world. Philips HearLink instruments support Bluetooth® Low Energy at 2.4 GHz and provide the following connectivity options and accessories.

Direct sound streaming

Philips HearLink instruments can be used like stereo headphones to directly stream music and phone calls from Android phones and tablets as well as iPhone, iPad, and iPod touch.

The new hands-free communication feature makes it possible to stream the user's voice from the hearing aid microphone back to an iPhone and iPad* without the use of the Philips AudioClip. Now users can communicate with others even more easily.

Accessory supported sound streaming

Some models* require an additional accessory to support sound streaming from TV, iPhone and Android smart devices. The Philips AudioClip accessory can be purchased separately and used with all behind-the-ear and receiver-in-the-ear styles.



Philips HearLink app
Easily and discreetly control
Philips HearLink with a smartphone.



* For information on compatibility, visit hearingsolutions.philips.com/compatibility.

Accessories



Philips AudioClip
Serves as a remote microphone and improves communication at a distance.



Philips Remote Control
Allows for discreet volume and program changes.



Philips TV Adapter
Streams TV sounds to Philips HearLink in premium sound quality.

What makes the new Philips HearLink unique?

1. Philips HearLink is the only hearing aid with premium technology and a brand recognized by consumers.
2. Philips HearLink pioneers the era of AI sound technology with the first ever AI Noise Reduction (AI-NR) in a hearing aid.
3. The sound processing and the connectivity of Philips HearLink are designed to make speech clearer and help the user to connect to people and the world.



miniRITE T non-rechargeable



miniRITE T R rechargeable



miniBTE T non-rechargeable



miniBTE T R rechargeable

The power of the Philips brand

no. 57
of the **best global brands** by Interbrand in 2021

10.4M likes on Facebook

363 million visits per year on philips.com

95% aided awareness of the brand

Brings traffic to your shop

OpenBass dome

With its SoundTunnels™ replacing conventional flat holes, the OpenBass dome allows high stability of the acoustical coupling of the speaker in individual ear canals, which provides an overall better sound quality, reduces the risk of feedback, and gives a fuller streaming experience.



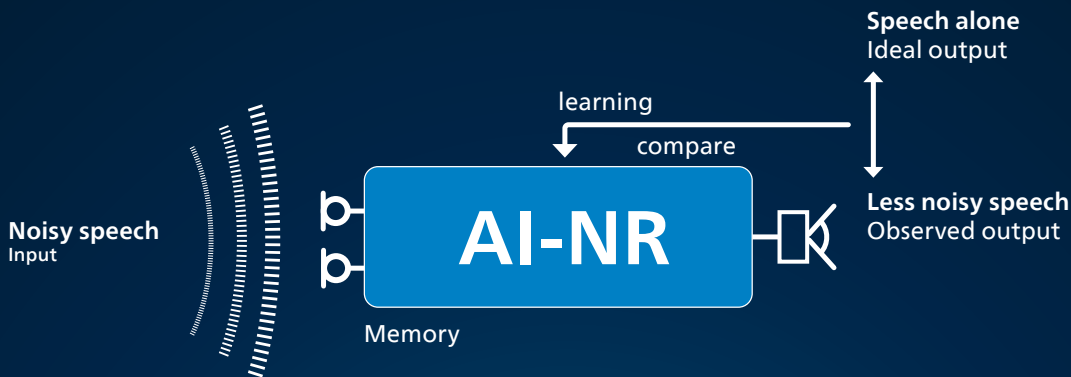
Reduced venting area by 70 %
same sound openness provided (compared to open dome)



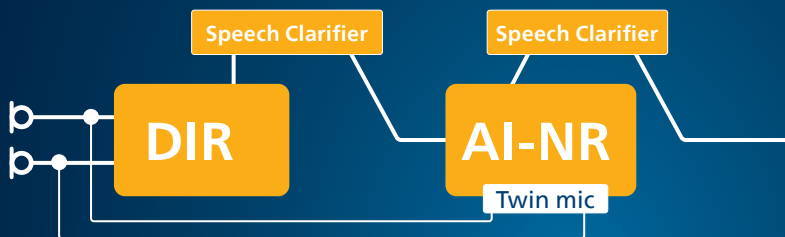
Premium technology to help the user create connections to people

Artificial intelligence (AI) sound technology

The intelligence of AI Noise Reduction (AI-NR) means that it coordinates its processing between the 24 frequency bands. This makes noise reduction more efficient and therefore speech clearer in noisy environments for the Philips HearLink user.



In contrast with classic digital signal processing, the AI-NR does not apply fixed sound processing rules, but learns its own noise reduction rules. During training, the AI-NR learns from its trials and errors as it repeatedly tries to make speech clearer through hundreds of thousands of training cycles (shown above).



Speech Clarifier

Complementing the effect of the directionality (DIR) and AI-NR, Speech Clarifier enhances how much speech stands out in noise to make speech clearer and help the user connect to people in noisy situations.

Connectivity

Philips HearLink directly connects to iOS and Android devices, making speech clearer for the user of Philips HearLink during phone calls.



**Imported and
Distributed by:**
Audmet Canada Ltd
1600 – 4950 Yonge St
Toronto, ON M2N 6K1

Apple, the Apple logo, iPhone, iPad, iPod touch, and Apple Watch are trademarks of Apple Inc., registered in the U.S. and other countries. App Store is a service mark of Apple Inc. Android, Google Play, and the Google Play logo are trademarks of Google LLC.

Philips and the Philips Shield Emblem are registered trademarks of Koninklijke Philips N.V. and are used under license. This product has been manufactured by or for and is sold under the responsibility of SBO Hearing A/S, and SBO Hearing A/S is the warrantor in relation to this product.