

PHILIPS

HearLink

Creating connections

Staying connected is fundamental to human beings. With hearing loss, one's ability to understand speech is compromised and connecting to others is more difficult. Combining sound processing and connectivity technologies, Philips HearLink is designed to make speech clearer and help users connect to people and the world.

Pioneering AI sound technology

The unique audiological features of Philips HearLink 30 are available in all device styles across multiple price points. All are engineered with the latest AI sound technology, which is our smartest solution to make speech even clearer, in the noisiest environments.

Mobile phones cast to TV screens, earpods wirelessly connect to mobiles, and mobiles stream music through car stereos. People have become accustomed to seamless connectivity between their everyday devices. They appreciate the ease and comfort it brings. Their demand for comfort, further fuels innovation in the area. For someone with hearing loss, their hearing aid is likely their most important device. Being able to link it with other technology, and thus facilitate their lifestyle, is essential.

With our latest innovation we were driven by the importance of connectivity. Particularly, its ability to provide a wholistic, premium, hearing aid user experience. The new hands-free communication feature makes it possible to stream the user's voice from the hearing aid microphone back to an iPhone and iPad* without the use of the Philips AudioClip. Now users can communicate with others even more easily. Philips HearLink partners premium technology with a recognizable consumer brand to create and preserve connections between people.

*Enabled by a new Bluetooth® Low Energy protocol.



Philips HearLink product portfolio

The intelligent rechargeable

MNR T R

This advanced premium hearing aid is the smartest solution. It is powered with AI sound technology for even better hearing. The rechargeable battery is fully charged within only 3 hours. It can have different speakers for mild to severe hearing losses.



Colors

top shell	black	dark gray	base shell
	gray	dark gray	
	dark gray	dark gray	
	beige	taupe	
	brown	taupe	
	taupe	taupe	

Series

9000	HL 9030
7000	HL 7030
5000	HL 5030
3000	HL 3030
2000	HL 2030

The rechargeable

MNR T R

This premium hearing aid with a rechargeable battery is fully charged within only 3 hours. It can have different speakers for mild to severe hearing losses.



Colors

top shell	black	dark gray	base shell
	gray	dark gray	
	dark gray	dark gray	
	beige	taupe	
	brown	taupe	
	taupe	taupe	

Series

9000	HL 9010
7000	HL 7010
5000	HL 5010
3000	HL 3010
2000	HL 2010

The intelligent functional

MNR T

This discreet hearing aid is powered with AI sound technology for even better hearing. It comes with telecoil and double push button for ease of use. It can be used for mild to severe hearing losses.



Colors

top shell	black	dark gray	base shell
	gray	dark gray	
	dark gray	dark gray	
	beige	taupe	
	brown	taupe	
	taupe	taupe	

Series

9000	HL 9030
7000	HL 7030
5000	HL 5030
3000	HL 3030
2000	HL 2030

The functional

MNR T

This discreet hearing aid comes with telecoil and double push button for ease of use. This hearing aid can have different speakers for mild to severe hearing losses.



Colors

top shell	black	dark gray	base shell
	gray	dark gray	
	dark gray	dark gray	
	beige	taupe	
	brown	taupe	
	taupe	taupe	

Series

9000	HL 9010
7000	HL 7010
5000	HL 5010
3000	HL 3010
2000	HL 2010
1700	HL 1700
1500	HL 1500

The stylish

MNR



The small and sleek receiver-in-the-ear hearing aid that fits discreetly behind the ear. This hearing aid can have different speakers for mild to severe hearing losses.

Colors



Series

9000	HL 9010
7000	HL 7010
5000	HL 5010
3000	HL 3010
2000	HL 2010
1700	HL 1700
1500	HL 1500

The strong

BTE PP



This hearing aid style is most commonly used for severe to profound hearing losses. It is a full-featured behind-the-ear hearing aid with telecoil and double push button.

Colors



Series

9000	HL 9010
7000	HL 7010
5000	HL 5010
3000	HL 3010
2000	HL 2010
1700	HL 1700
1500	HL 1500

The powerful

BTE SP



This powerful hearing aid style is for people with severe to profound hearing losses. It is a full-featured behind-the-ear hearing aid with a telecoil, a single and a double push button for easy volume and program change.

Colors



Series

9000	
7000	HL 7020
5000	
3000	HL 3020
2000	

The mighty

BTE UP



This robust hearing aid is the most powerful aid. It is suitable for people with severe to profound hearing loss. It is a full-featured behind-the-ear hearing aid with telecoil, a single and a double push button for easy volume and program change.

Colors



Series

9000	
7000	HL 7020
5000	
3000	HL 3020
2000	

The robust rechargeable

MNB T R



This rechargeable hearing aid is powered with AI sound technology for even better hearing. It suits up to moderately severe hearing losses. It is a full-featured behind-the-ear hearing aid with telecoil and push button. The rechargeable battery is fully charged within only 3.5 hours.

Colors

top shell	black	dark gray	base shell
	gray	dark gray	
	dark gray	dark gray	
	beige	taupe	
	brown	taupe	
	taupe	taupe	

Series

9000	HL 9030
7000	HL 7030
5000	HL 5030
3000	HL 3030
2000	HL 2030

The convertible

ITC



The small and sleek receiver-in-the-ear hearing aid that fits discreetly behind the ear. This hearing aid can have different speakers for mild to severe hearing losses.

Colors

beige
light brown
mid brown
dark brown
black*

Series

9000	HL 9030
7000	HL 7030
5000	HL 5030
3000	HL 3030
2000	HL 2030
1700	HL 1700
1500	HL 1500

The robust

MNB T



This hearing aid is powered with AI sound technology for even better hearing. It suits up to moderately severe hearing losses. It is a full-featured behind-the-ear hearing aid with telecoil and push button.

Colors

top shell	black	dark gray	base shell
	gray	dark gray	
	dark gray	dark gray	
	beige	taupe	
	brown	taupe	
	taupe	taupe	

Series

9000	HL 9030
7000	HL 7030
5000	HL 5030
3000	HL 3030
2000	HL 2030

The discreet

CIC



The completely-in-canal hearing aid style is for mild to moderately severe hearing losses. It is worn completely in the ear canal and is barely visible from the outside.

Colors

beige
light brown
mid brown
dark brown
black*

Series

9000	HL 9030
7000	HL 7030
5000	HL 5030
3000	HL 3030
2000	HL 2030
1700	HL 1700
1500	HL 1500

* not available for HL 1700|1500

The extra small

IIC



The smallest Philips HearLink hearing aid that fits deeply in the ear canal and is practically invisible. This hearing aid style is for mild to moderately severe hearing losses.

Color



Series

9000	HL 9030
7000	HL 7030
5000	HL 5030
3000	HL 3030
2000	HL 2030
1700	HL 1700
1500	HL 1500

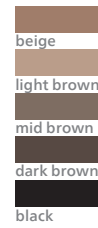
The versatile

ITE HS



This hearing aid style is for slight to severe hearing losses. It is worn in the ear canal and fills about half of the concha. The larger size enables space for full features like a volume control and directional microphones to help when listening in noise.

Colors



Series

9000	HL 9030
7000	HL 7030
5000	HL 5030
3000	HL 3030
2000	HL 2030

The flexible

ITE FS



This hearing aid style is for slight to severe hearing losses. It is worn in the ear canal and fills most of the concha. The larger size enables space for full features like a volume control and directional microphones to help when listening in noise.

Colors



Series

9000	HL 9030
7000	HL 7030
5000	HL 5030
3000	HL 3030
2000	HL 2030

Receiver-in-the-ear & behind-the-ear styles

Model series	AI sound technology that makes speech clearer in noise	Rechargeable	Connects directly to Android™ smartphone, TV, tablet** **	Connects to iPhone, iPad, iPod touch*	Hands-free communication to and from your iPhone and iPad*	Severe to profound hearing loss	Moderate to severe hearing loss	Slight to moderate hearing loss
The intelligent rechargeable miniRITE T R - 9030 - 2030	•	•	•	•	•	—	•	•
The intelligent functional miniRITE T - 9030 - 2030	•	—	•	•	•	—	•	•
The functional miniRITE T 1700 & 1500	—	—	—	•	—	—	•	•
The stylish miniRITE 9010 - 2010	—	—	—	•	—	—	•	•
The stylish miniRITE 1700 & 1500	—	—	—	•	—	—	•	•
The robust rechargeable miniBTE T R 9030 - 2030	•	•	•	•	•	—	•	•
The robust miniBTE T 9030 - 2030	•	—	•	•	•	—	•	•
The strong BTE PP 9010 - 2010	—	—	—	•	—	•	•	—
The strong BTE PP 1700 & 1500	—	—	—	•	—	•	•	—
The powerful BTE SP 7020 & 3020	—	—	—	•	—	•	•	—
The mighty BTE UP 7020 & 3020	—	—	—	•	—	•	—	—

In-the-ear styles

Model series	AI sound technology that makes speech clearer in noise	Rechargeable	Connects directly to Android™ smartphone, TV, tablet** **	Hands-free communication to and from your iPhone and iPad*	Telecoil***	Moderate to severe hearing loss	Slight to moderate hearing loss
The intelligent extra small IIC 9030 - 2030	•	—	—	—	—	—	•
The extra small IIC 1700 & 1500	—	—	—	—	—	—	•
The intelligent discreet CIC 9030 - 2030	•	—	—	—	—	—	•
The discreet CIC 1700 & 1500	—	—	—	—	—	—	•
The intelligent convertible ITC 9030 - 2030	•	—	•	•	•	•	•
The convertible ITC 1700 & 1500	—	—	—	—	•	•	•
The versatile ITE HS 9030 - 2030	•	—	•	•	•	•	—
The flexible ITE FS 9030 - 2030	•	—	•	•	•	•	—

* For information on compatibility, please visit hearingsolutions.philips.com/compatibility.

** All models stream from Android smartphones, TV and tablet using the Philips AudioClip accessory that can be purchased separately.

*** Telecoil available as an optional feature.

How to navigate the Philips HearLink product portfolio

Staying connected is fundamental to human beings. With hearing loss, one's ability to understand speech is compromised and connecting to others is more difficult. Combining sound processing and connectivity technologies, Philips HearLink are designed to make speech clearer and help users connect to people and the world.

Understanding the value of a higher series:

- better speech clarity to the user due to the higher frequency bandwidth
- series are from 9000 to 1500, with 9000 being the highest
- better support to the user to understand conversation in noisy places due to more powerful directionality and noise reduction processing
- more settings for hearing care professionals to be able to better fit the needs of individual users.



The rechargeable Philips HearLink

The rechargeable Philips HearLink 30 hearing aids feature unique AI sound technology that removes noise efficiently to create a superb sound quality. Speech Clarifier further makes speech stand out in noise. Add to that the industry's smartest dome with SoundTunnels™ to improve sound quality and lower the risk of feedback.

Then add improved connectivity options to directly stream sound from iOS and Android devices. It's a winning combination for helping people with hearing loss to connect.

miniBTE T R

Hands-free communication

Directly stream the user's voice from the hearing aid microphone back to an iPhone and iPad*

HiFi Music

Amplification scheme optimizes low and high frequencies in music

SoundMap 2

With AI sound technology

Acoustic options

Many domes and earmolds

LED

Battery and charging indicator

SoundTie 2

Now with direct sound streaming from iOS and Android devices

Telecoil

Made for
 iPhone | iPad | iPod

Works with
 android

Push button

Volume and program change

Colors

beige | taupe

gray | dark gray

dark brown | taupe

taupe | taupe

dark gray | dark gray

black | dark gray



Portable Charger Plus

miniRITE T R

Hands-free communication

Directly stream the user's voice from the hearing aid microphone back to an iPhone and iPad*

SoundMap 2

With AI sound technology

LED

Battery and charging indicator

SoundTie 2

Now with direct sound streaming from iOS and Android devices

Push buttons

Volume and program change

miniFit speakers

Speaker 60, 85, 100, 105

Acoustic options

Many domes and earmolds

Made for
iPhone | iPad | iPod

Works with
android

Colors

beige taupe		gray dark gray	
dark brown taupe		taupe taupe	
dark gray dark gray		black dark gray	

Charger

*Enabled by a new Bluetooth® Low Energy protocol

How Philips HearLink helps you connect

SoundMap technology creates the sound of Philips HearLink and helps users to connect with people they see everyday. It is made up of three sound processing pillars:



SoundMap Noise Control: Reduces background noise and makes speech easier to understand in noisy places.



SoundMap Amplification: Optimizes the audibility of sound details and clarity of speech information. Speech envelope cues are better preserved in noisy environments.



SoundMap Feedback Canceller: Quickly and effectively detects and counteracts the early build-up of feedback. The feedback growth is stopped by applying a short breaker signal.

SoundMap 2 technology uses groundbreaking AI sound technology to support users to connect with all people near and far using the latest innovations.



SoundMap 2 Noise Control with new AI Noise Reduction (AI-NR): Reduces background noise and makes speech easier to understand in noisy places. Now improved with artificial intelligence sound technology, making speech even clearer in noise.



SoundMap 2 Amplification with new Speech Clarifier: Enhances the clarity of speech in noisy environments, set to personal preference.



How Philips HearLink connects to the world

SoundTie and SoundTie 2 technology allow users to take full advantage of modern connectivity and stay in touch with friends, family and the world. Philips HearLink instruments support Bluetooth® Low Energy at 2.4 GHz and provide the following connectivity options and accessories.

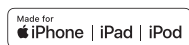
Direct sound streaming

Philips HearLink instruments can be used like stereo headphones to directly stream music and phone calls from Android phones and tablets as well as iPhone, iPad, and iPod touch.

The new hands-free communication feature makes it possible to stream the user's voice from the hearing aid microphone back to an iPhone and iPad* without the use of the Philips AudioClip. Now users can communicate with others even more easily.

Accessory supported sound streaming

Some models* require an additional accessory to support sound streaming from TV, iPhone and Android smart devices. The Philips AudioClip accessory can be purchased separately and used with all behind-the-ear and receiver-in-the-ear styles.



Philips HearLink app
Easily and discreetly control
Philips HearLink with a smartphone.



*For information on compatibility, visit hearingsolutions.philips.com/compatibility.

Accessories



Philips AudioClip
Serves as a remote microphone and improves communication at a distance.



Philips Remote Control
Allows for discreet volume and program changes.



Philips TV Adapter
Streams TV sounds to Philips HearLink in premium sound quality.

What makes the new Philips HearLink unique?

1. Philips HearLink is the only hearing aid with premium technology and a brand recognized by consumers.
2. Philips HearLink pioneers the era of AI sound technology with the first ever AI Noise Reduction (AI-NR) in a hearing aid.
3. The sound processing and the connectivity of Philips HearLink are designed to make speech clearer and help the user to connect to people and the world.



The power of the Philips brand



10.4M likes on Facebook

363 million visits per year on philips.com

95% aided awareness of the brand

Brings traffic to your shop



HiFi Music

Essentially, HiFi Music is designed to make music feel incredible. With better dynamics for amplifying the wide range of frequencies in music, the listening experience stays true to the songs people enjoy.

Connectivity

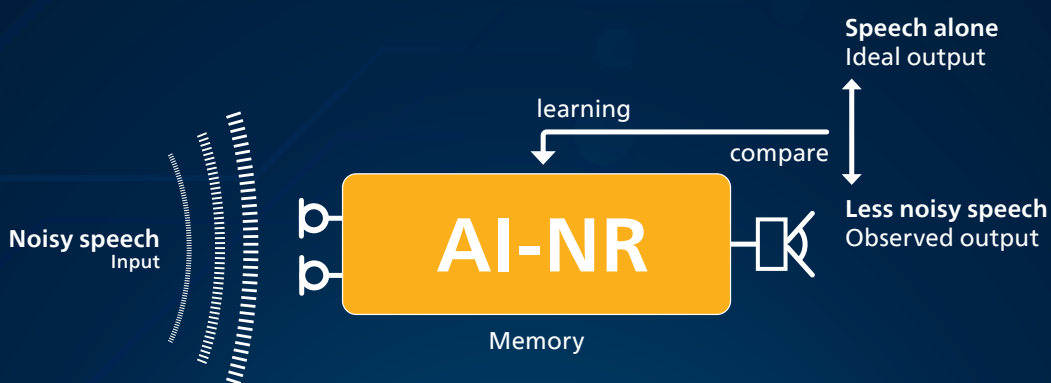
Philips HearLink directly connects to iPhone, iPad, and Android™* devices, making speech clearer for Philips HearLink users during phone calls.

*For information on compatibility, please visit hearingsolutions.philips.com/compatibility.

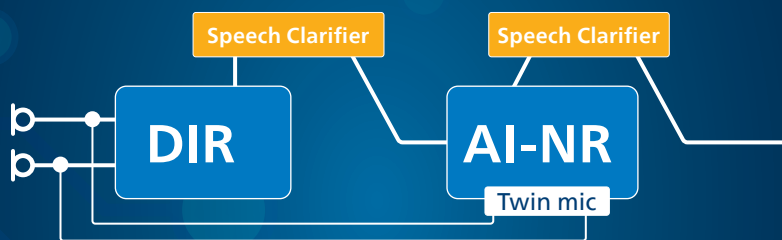
Premium technology helps the user create connections to people

AI sound technology

The intelligence of AI-NR means that it coordinates its processing between the 24 frequency bands. This makes noise reduction more efficient and therefore speech clearer in noisy environments for the Philips HearLink user.



In contrast with classic digital signal processing, the AI-NR does not apply fixed sound processing rules, but learns its own noise reduction rules. During training, the AI-NR learns from its trials and errors as it repeatedly tries to make speech clearer through hundreds of thousands of training cycles (shown above).



Speech Clarifier

Complementing the effect of the directionality (DIR) and AI-NR, Speech Clarifier enhances how much speech stands out in noise to make speech clearer and help the user connect to people in noisy situations.



Apple, the Apple logo, iPhone, iPad, iPod touch, and Apple Watch are trademarks of Apple Inc., registered in the U.S. and other countries. App Store is a service mark of Apple Inc. Android, Google Play, and the Google Play logo are trademarks of Google LLC. The Bluetooth® word mark and logos are registered trademarks owned by Bluetooth SIG, Inc. and any use of such marks by Demant A/S is under license. Other trademarks and trade names are those of their respective owners.

Philips and the Philips Shield Emblem are registered trademarks of Koninklijke Philips N.V. and are used under license. This product has been manufactured by or for and is sold under the responsibility of SBO Hearing A/S, and SBO Hearing A/S is the warrantor in relation to this product.